



80km/H Mini EV Bus Pickup Electric Truck 10500W

Our Product Introduction

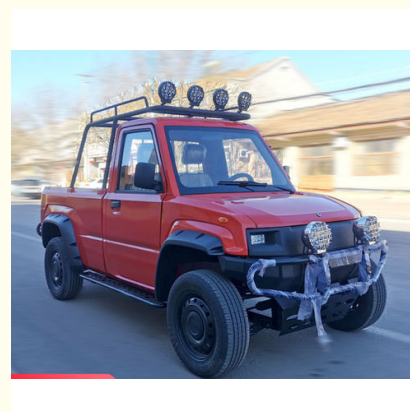
Basic Information

- Place of Origin: CHINA
- Brand Name: KaiYun
- Certification: L7E, EEC, LSV
- Model Number: XR(4x4)
- Minimum Order Quantity: 3units
- Price: USD4500~8000
- Packaging Details: naked and protected with films
- Delivery Time: 20days
- Payment Terms: Western Union, L/C, T/T, MoneyGram
- Supply Ability: 150000units/year



Product Specification

- Overall Size: 3600×1520×1820mm
- Inner Container Size: 1620X1245X300mm
- Wheel Base: 2315mm
- Min. Ground Clearance: >200mm
- Cabin Type: Single With 2seats
- Gross Total Weight: 1230kg
- Cargo Loading: 300kg
- Top. Speed: 80-85km/h
- Driving Range: 150KM(Unload)
- Motor Type: AC Asynchronous Motor
- Total Power: 10500W
- Battery Type: Lithium Iron Phosphate Battery
- Battery Specs: 76.8V/206Ah
- Charging: 5-8h
- Max. Grade Ability: 35%



More Images



for more products please visit us on battery-generator.com

Product Description

200mm Ground Clearance Electric Pickup Truck, Electric Light Truck, 80KM speed with Full Wheel Driving

Product Detailed Specification:

Model	XR (4X4) KK1121D10
Basic Parameters	
L*W*H(mm)	3600×1520×1820
Inner dimension of container	1620X1245X300
Wheelbase (mm)	2315
Front track width (mm)	1315
Rear track width (mm)	1315
Front Overhang (mm)	455
Rear Overhang (mm)	705
Curb weight (kg)	800
Cargo weight (kg)	300
Rated Passengers	2
Total Gross(kg)	1230
Performance parameter	
Top speed(km/h)	80(Instrument display 85)
Acceleration time (s)	20s from 0km to 40km
Maximum Garde Ability	35%
Min. turning diameter (m)	≤9
Maximum angle	36.3(Outer wheel)/42(Inner wheel)
Approach angle (°)	≥55
Departure angle (°)	≥35
Minimum ground clearance (mm, no load)	≥200
Body structure	
Cab upper body	Sheet Metal
Steel pipe door	Optional
Cargo box	Rear opening type
Battery / motor parameters	
Power Battery Specs(V / ah)	76.8V , 206Ah
Driving range (km)	150km(unloaded)
Battery type	Lithium iron phosphate battery(LFP)
Charger	110 ~ 220V portable charger (wide voltage)
Charging time (h)	5~8h
Power consumption (KWH)	6.5kwh/100 km
Motor type	AC asynchronous motor
Motor controller	Dual motor controller
Rated power (kw)	10.5KW(front 3kw,rear 7.5kw)
Chassis / wheel brake	
Driving form	Rear drive / 4WD
Front suspension	Double wishbone spiral spring independent suspension
Rear suspension	Longitudinal leaf spring(3 piece)
Drive axle	Front axle 6.77/1 Rear axle(7.99/1)
Front brake	Disc
Rear brake	Drum
Wheel	15 inch steel rim
Aluminum rim	○

Tire size	195/65 R15(Ordinary pattern)
Off -road tire size	○ 195/65 R15(Off road tread pattern)
Steering structure	Rack and pinion
Power steering	●
Brake assist	●

Products Features:

- At the beginning of the development of pickman, we returned to the fundamental demand of people for transportation tools
- to load more things and go farther. To achieve this goal, we redefined pickman's product design ideas.
- Revolutionary materials, from "zero" to "whole".
- Gold ratio, love at first sight
- Under the fine and reasonable structure, the body shape of pickman has reached the golden ratio, and the overall posture is stable and dynamic.

Products HD pictures:





Details Pictures:





Reference Video:

Customers View:

□

Company Profile:

Wuhan Essence Tech Co.,Ltd is a trading company who has been focus on Automotive exporting more than 5years. We cooperates deeply with many big and famous Manufacturers of Vehicle such as DONGFENG, Changan, Chuanqi and Chevrolet, on the sales of their Passenger cars, commercial cars and also the special use vehicles. Basing on the hard work during past years, we have successfully exported the full series vehicle of these brands to Egypt, Colombia, Kazakhstan, Russia, Algeria, Lebanon, Sudan and Jordan etc. countries which have gained good reputation locally. It has gained a good reputation locally.

From the first day of setting up, we always adhered to the principle of "providing customers with cost-effective products" and the concept of "Win-Win with Customers", to make more people around the world to know, to understand, recognize and support Chinese Vehicles.

We adopt 5A mode management, control the products quality strictly, set up the complete sourcing and supplying system, to make sure our customers can be served with the shortest delivery time, most competitive price and best quantity vehicles. Now, at this moment of the alternation of new and old energy vehicles, we are willing to cooperate with the cooperators all over the world to create our new time together.

Packing and Shipping:

□

FAQ:

Q: How many trucks does your factory produce per years?

A: Almost 15000 units

Q:How about the warranty?

A:One year for motor and battery.

Q:How about the delivery time?

A: Most of our trucks are all have in stock ,We can delivery to you within 7 days after order confirmed

Q:How about shipping ?

A: Big size trucks always shipping by RORO or Bulk ship or flat bed container or open top container, small type can shipping by container ,

Pls contact us to get a shipping quotation .

Q: How about your product After-sales service system?

A: Our main export country have accepted after-sales service,some of country used the third department service.

Q: Do you accept Custom orders? What's is your MOQ order?

A: Yes, we do, our MOQ is depends on exact model, mostly is 1 unit.

Q:Which country do you have exported to?

A: our special trucks can be found in many parts of the world, such as Russia, Ukraine,Uzbekistan,Jordan, Chile, Brazil, Thailand, Malaysia, Lebanon etc, and gain good reputation from local market.

Q. Is it OK to print my logo on ?

A: Yes. Please tell to us about quantity.



HaiNan SynYune EV Technology Co.,Ltd



SY.lackie@163.com



battery-generator.com

